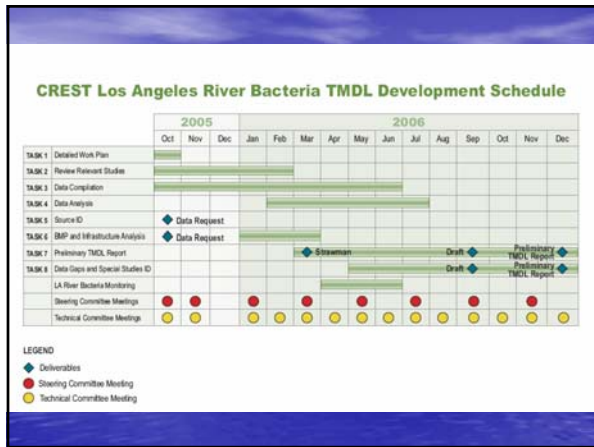
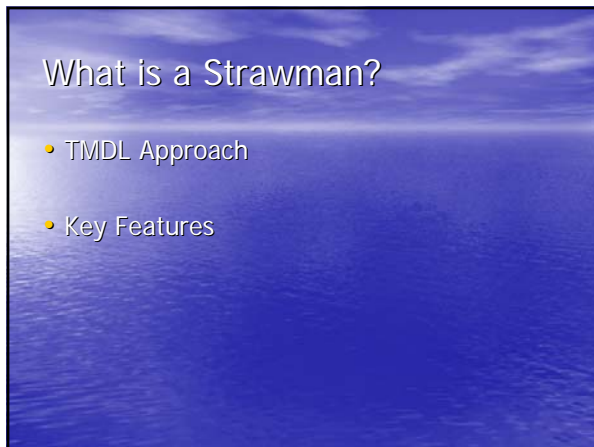


DRAFT – FOR DISCUSSION PURPOSES ONLY







PRELIMINARY RESULTS – DO NOT CITE OR QUOTE

DRAFT – FOR DISCUSSION PURPOSES ONLY





Basin Plan Water Quality Objectives

Waterbody	Parameter	Geometric Mean (per 100ml)	Single Sample (per 100ml)
Fresh Waters Designated REC-1	Fecal	200	400
	<i>E. Coli</i>	126	235
Marine Waters Designated REC-1	Total	1,000	10,000 or 1,000 if FC/TC > 0.1
	Fecal	200	400
	<i>Enterococcus</i>	35	104

PRELIMINARY RESULTS – DO NOT CITE OR QUOTE

DRAFT – FOR DISCUSSION PURPOSES ONLY

Basin Plan Water Quality Objectives

- REC2 (Non Water Contact Recreation); Fecal coliform not to exceed 2,000 MPN/100ml (based on a minimum of four samples for any 30-day period) and not more 10% samples collected during any 30-day period exceed than 4,000 MPN/100ml at any time

High Flow Suspension

- Suspension of REC-1 and REC-2 beneficial uses and the associated bacteriological objectives set to protect those activities
- Applies on days with rainfall greater than or equal to 1/2 inch and the 24 hours following the end of the 1/2-inch or greater rain event, as measured at the nearest local rain gauge, using local Doppler radar, or using widely accepted rainfall estimation methods
- Applies to engineered channels, defined as inland flowing surface water bodies with a box, V-shaped or trapezoidal configuration that have been lined on the sides and/or bottom with concrete

Summary of Available Data for Bacteria TMDL for the Los Angeles River

PRELIMINARY RESULTS – DO NOT CITE OR QUOTE

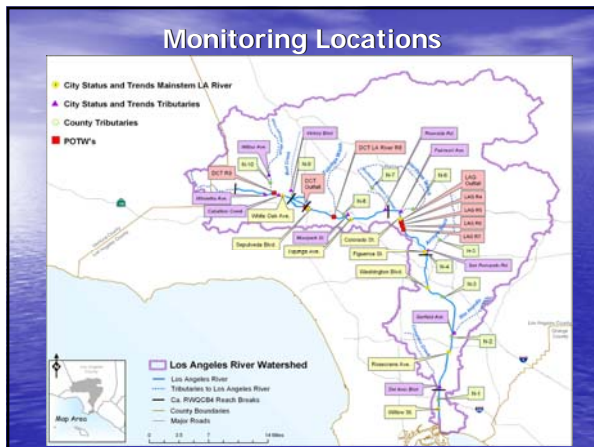
DRAFT – FOR DISCUSSION PURPOSES ONLY

GeoDatabase: GIS data list

Category	Data Description	Status
Census	<ul style="list-style-type: none"> Original census boundaries Low/moderate income info by census tracts Processed census tracts overlaid with watershed boundaries 	Available (Extent LA County)
Demand Points	<ul style="list-style-type: none"> Location of potential water demand points 	Available
Landuse	<ul style="list-style-type: none"> Original landuse boundaries Processed landuse overlaid with city boundaries Landuse boundaries with impervious info 	Available (Extent LA County)
Parcels	<ul style="list-style-type: none"> Original parcel boundaries from the City of LA 	Available (Extent LA City)
Political Boundaries	<ul style="list-style-type: none"> City and County boundaries (Extent LA County) State assembly boundaries (Extent state of California) State Senate district boundaries (Extent state of California) State congressional district boundaries (Extent state of California) 	Available

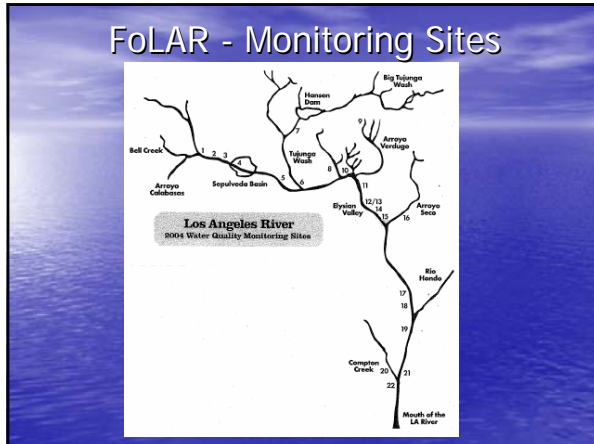
GeoDatabase: GIS data list

Category	Data Description	Status
Sample Locations	<ul style="list-style-type: none"> Sample locations along the LA River 	Available
Soils	<ul style="list-style-type: none"> Original soil type boundaries Lookup tables for infiltration capabilities Soil boundaries clipped to watershed areas 	Available (Extent LA County)
Thomas Brother's street dataset	<ul style="list-style-type: none"> City boundaries Major and minor streets Freeways and highways 	Available
Utility	<ul style="list-style-type: none"> Storm drains and storm drain inlets Water supply locations Wastewater treatment plants 	Available (Extent City of LA)
Water Bodies	<ul style="list-style-type: none"> Water bodies 	Available (Extent LA County)
Watershed	<ul style="list-style-type: none"> LA River watershed boundaries with sub-watersheds 	Available

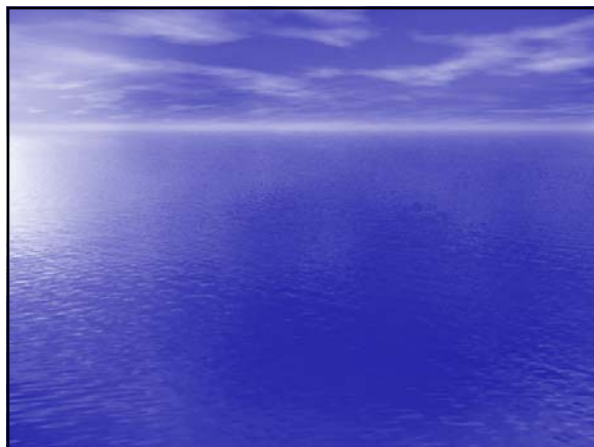


PRELIMINARY RESULTS – DO NOT CITE OR QUOTE

DRAFT – FOR DISCUSSION PURPOSES ONLY



- ### Additional Information/Data Sources
- L.A. Regional Water Quality Control Board
 - Arroyo Seco Foundation
 - The River Project
 - USEPA
 - Others?



PRELIMINARY RESULTS – DO NOT CITE OR QUOTE