



# Ballona Creek and Estuary Bacteria TMDL

## Discussion of Potential CREST Studies/Tasks and Monitoring Strategy

CREST Technical Committee  
February 15, 2005



## Status

- **December 7 TC meeting**
  - Reviewed possible additional studies/tasks
  - Discussed prioritization approach
- **Since then**
  - Refined prioritization approach and list of potential studies/tasks based on Dec. 7 input
  - Made “first cut” use of approach to suggest potential higher priority efforts for CREST involvement
  - On separate, related track developing preliminary Work Plan for LA River bacterial TMDL
  - Also in parallel, general CREST roles have been refined



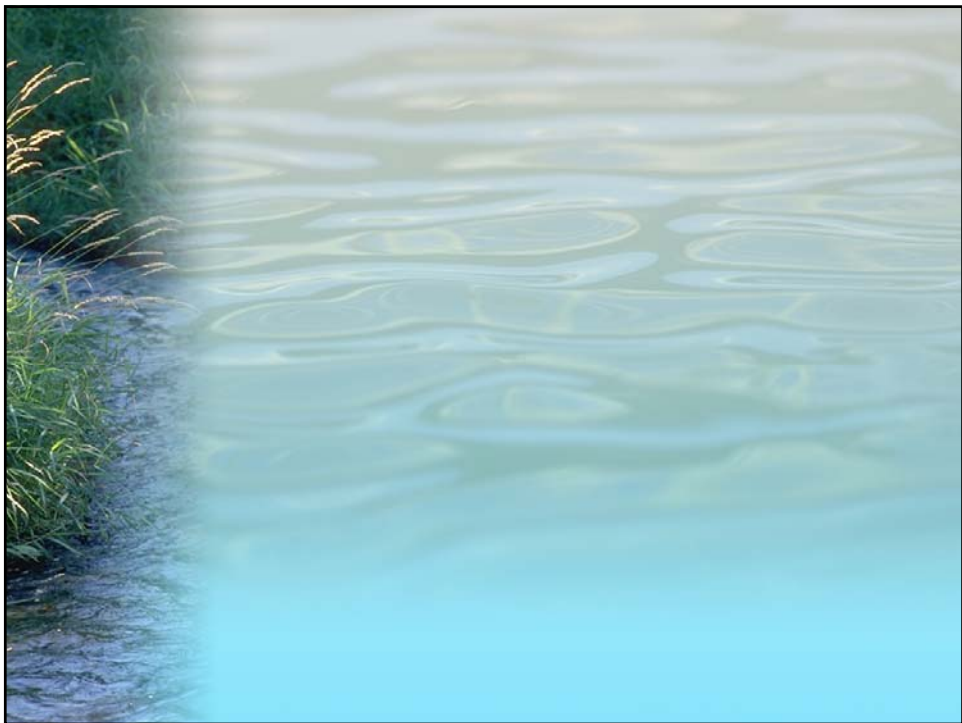
## Potential CREST Roles in TMDL Development Process

- Technical TMDL development (Steps 1-5)
- “Water Quality Attainment Strategy” development (Steps 6-7)



## Refined Selection Criteria

- *Time Sensitivity* – Can the task be accomplished to provide input into a TMDL and meet deadlines?
- *Cost/Benefit Value Towards Meeting TMDL Objectives* – Would it provide cost-effective input to the development of WLA or implementation plan?
- *Potential for Multiple Benefits* – Does the study fill other data needs, for multiple TMDLs) or for other stakeholder purposes?
- *Readiness to Implement* – Is the study simple or complex to implement, e.g., are potential participants on board/supportive?





### **Potential High Priority CREST tasks based on results**

- **Develop implementation options and strategies**
- **Develop implementation cost estimates**
- **Develop monitoring and compliance strategies**
- **These fall under the “WQA Strategy” development role**



## **Other studies/tasks in list**

- **Suggest CREST review/discuss further during TMDL development phase**
- **Further prioritize and refine for possible inclusion under WQA strategy of TMDL**



## **Next Steps**

- **TC discussion on potential high priority tasks**
- **Develop short work plans for high priority tasks for TC review and input**
- **TC report to Steering Committee**